

DKIS Renewables Report: 1 Jan 2024 - 31 Mar 2024

Renewables
Penetration:

11.2%

Fossil Fuels:

77.8%

Other Sources*:

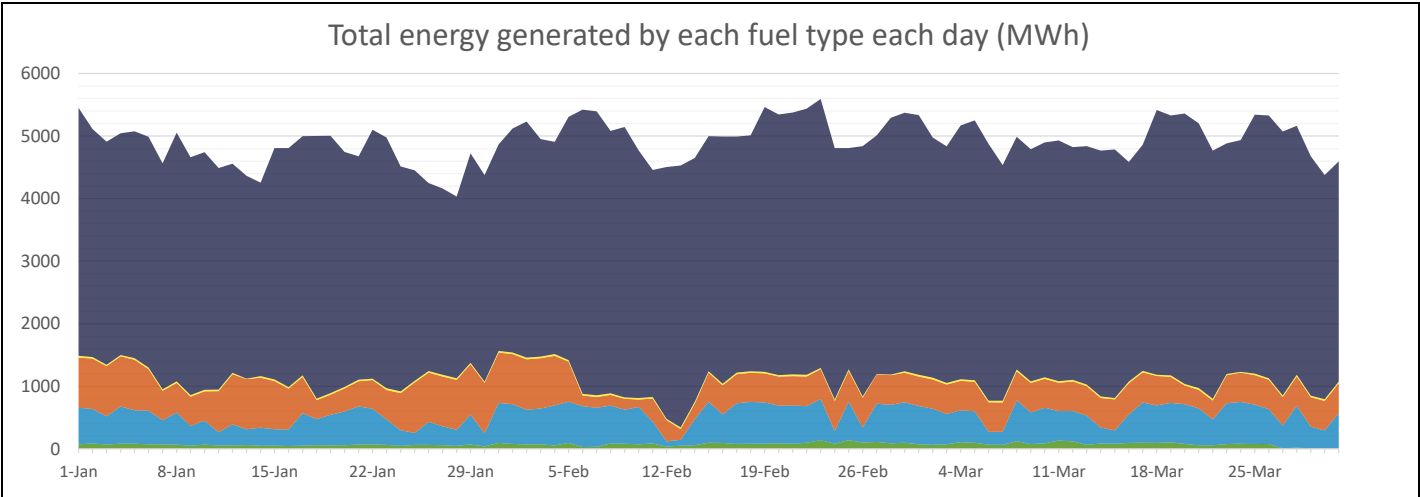
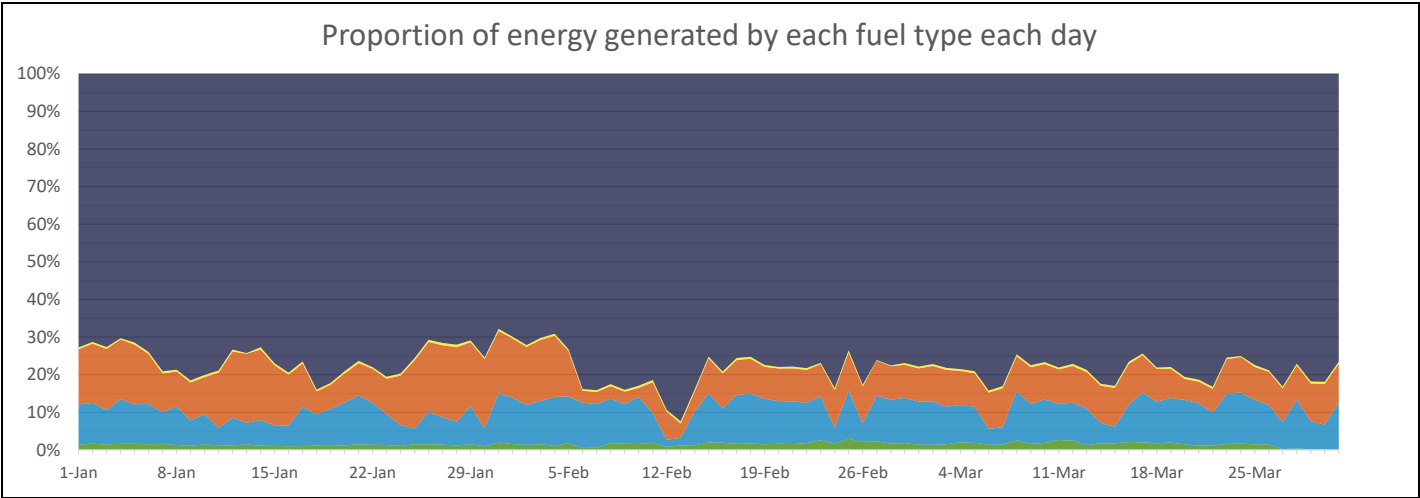
11.0%

Minimum Gross Demand:	130.5	MW @ 3:00, 28 Jan
Maximum Gross Demand:	304.4	MW @ 15:00, 23 Feb
Minimum Net Demand:	130.5	MW @ 3:00, 28 Jan
Maximum Net Demand:	260.6	MW @ 18:00, 1 Jan
Maximum Renewable Power:	106.6	MW @ 13:00, 8 Mar

Total Overall		
Fuel	MWh	Percent
Fossil	347,852	77.8%
Biomass	2,197	0.5%
Steam	47,038	10.5%
Distributed PV	43,636	9.8%
Utility Solar	6,576	1.5%

Best Hour:		
41.8%	at	11:00, 17 Mar
Fuel	MWh	Percent
Fossil	113.0	49.8%
Biomass	0.0	0.0%
Steam	19.0	8.4%
Distributed PV	82.7	36.5%
Utility Solar	12.0	5.3%

Best Week:		
13.2%	for	18 Mar - 24 Mar
Fuel	MWh	Percent
Fossil	28,302	78.8%
Biomass	157	0.4%
Steam	2,702	7.5%
Distributed PV	4,191	11.7%
Utility Solar	548	1.5%



* Landfill gas is methane sourced from the Shoal Bay waste facility that is burned to power a generator. This methane is constantly generated by the waste and would otherwise be released into the atmosphere. Therefore, utilising it in this way in fact decreases the emissions by destroying the methane and by offsetting the need for additional fossil fuel generation. (<https://www.epa.gov/lmop/benefits-landfill-gas-energy-projects>)

* Steam is created using waste heat from fossil fuel generation. The steam is then used to create low-emissions power that offsets the need for additional fossil fuel generation.

Data sources:
BTM - 3rd party estimated actuals
Other generation - PI

This report is for informational purposes only and is subject to the accuracy of the source data.