

# Alice Springs Renewables Report: 1 Apr 2024 - 30 Jun 2024

Renewables  
Penetration:

19.2%

Fossil Fuels:

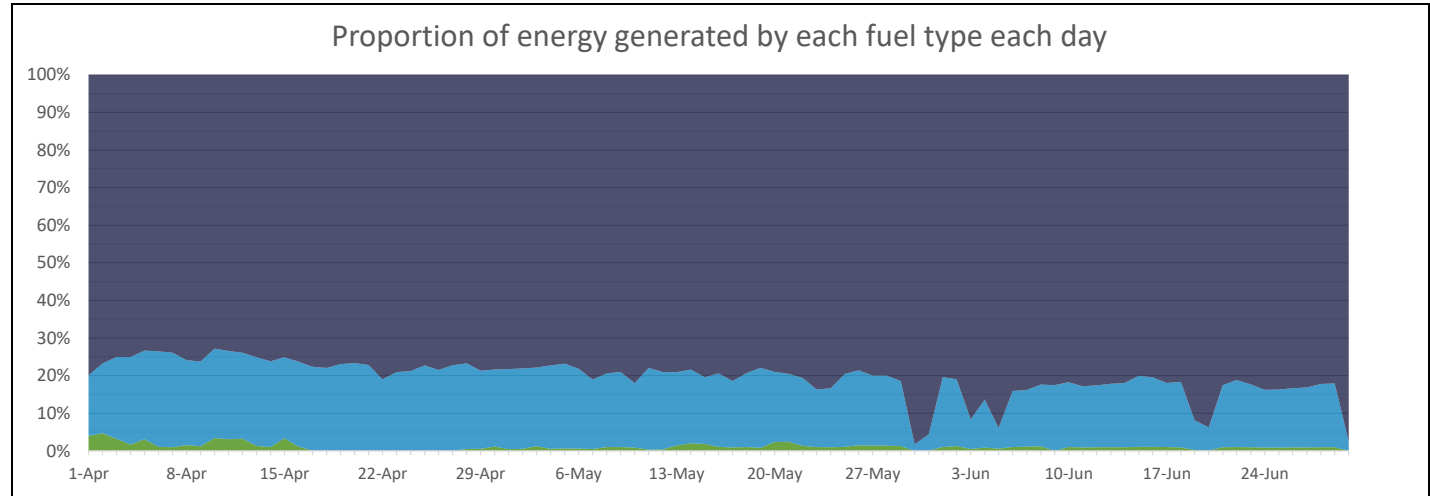
80.8%

Other Sources\*:

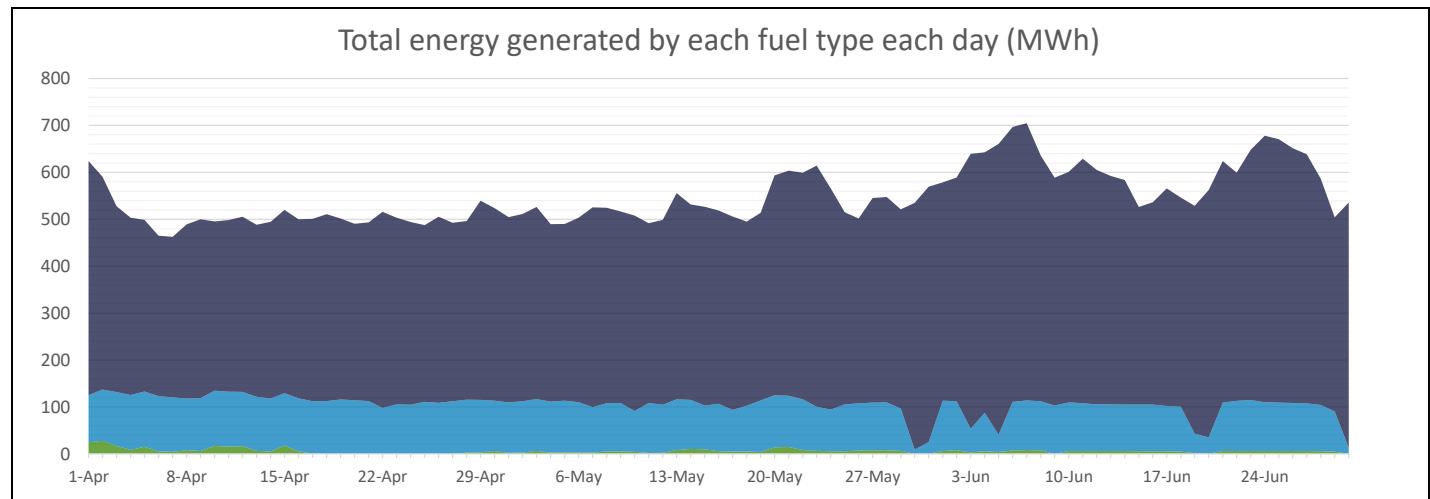
0.0%

Minimum Gross Demand:	13.7	MW @ 3:00, 8 Apr
Maximum Gross Demand:	40.5	MW @ 8:00, 7 Jun
Minimum Net Demand:	7.2	MW @ 12:00, 27 Apr
Maximum Net Demand:	39.3	MW @ 7:00, 7 Jun
Maximum Renewable Power:	17.9	MW @ 13:00, 2 Apr

Total Overall		
Fuel	MWh	Percent
Fossil	40,226	80.8%
Biomass	0	0.0%
Steam	0	0.0%
Distributed PV	9,049	18.2%
Utility Solar	540	1.1%



Best Hour:		
69.2%	at	13:00, 11 Apr
Fuel	MWh	Percent
Fossil	7.4	30.8%
Biomass	0.0	0.0%
Steam	0.0	0.0%
Distributed PV	15.5	64.8%
Utility Solar	1.0	4.4%



Best Week:		
25.2%	for	8 Apr - 14 Apr
Fuel	MWh	Percent
Fossil	2,596	74.8%
Biomass	0	0.0%
Steam	0	0.0%
Distributed PV	801	23.1%
Utility Solar	74	2.1%

\* Landfill gas is methane sourced from the Shoal Bay waste facility that is burned to power a generator. This methane is constantly generated by the waste and would otherwise be released into the atmosphere. Therefore, utilising it in this way in fact decreases the emissions by destroying the methane and by offsetting the need for additional fossil fuel generation. (<https://www.epa.gov/lmop/benefits-landfill-gas-energy-projects>)

**Data sources:**  
BTM - 3rd party estimated actuals  
Other generation - PI

This report is for informational purposes only and is subject to the accuracy of the source data.

\* Steam is created using waste heat from fossil fuel generation. The steam is then used to create low-emissions power that offsets the need for additional fossil fuel generation.