

# Northern Territory Renewables Report: 30 Mar 2026 - 28 Jun 2026

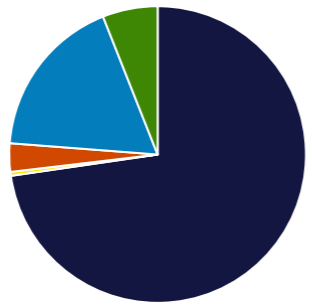
Renewable Penetration: **23.8%**

Fossil Fuels: **72.7%**

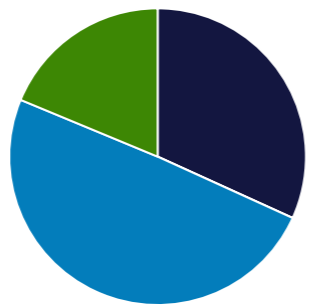
Other Sources: **3.5%**

Minimum Gross Demand:	127.6 MW @ 3:00, 8 Jun
Maximum Gross Demand:	337.6 MW @ 14:00, 2 Apr
Minimum Net Demand:	80.6 MW @ 12:00, 7 Jun
Maximum Net Demand:	283.3 MW @ 18:00, 1 Apr
Maximum Renewable Power:	187.2 MW @ 12:00, 15 Apr

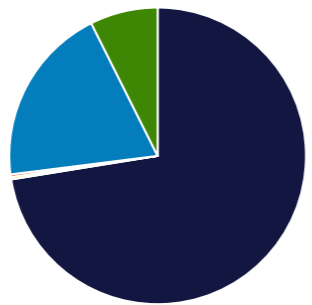
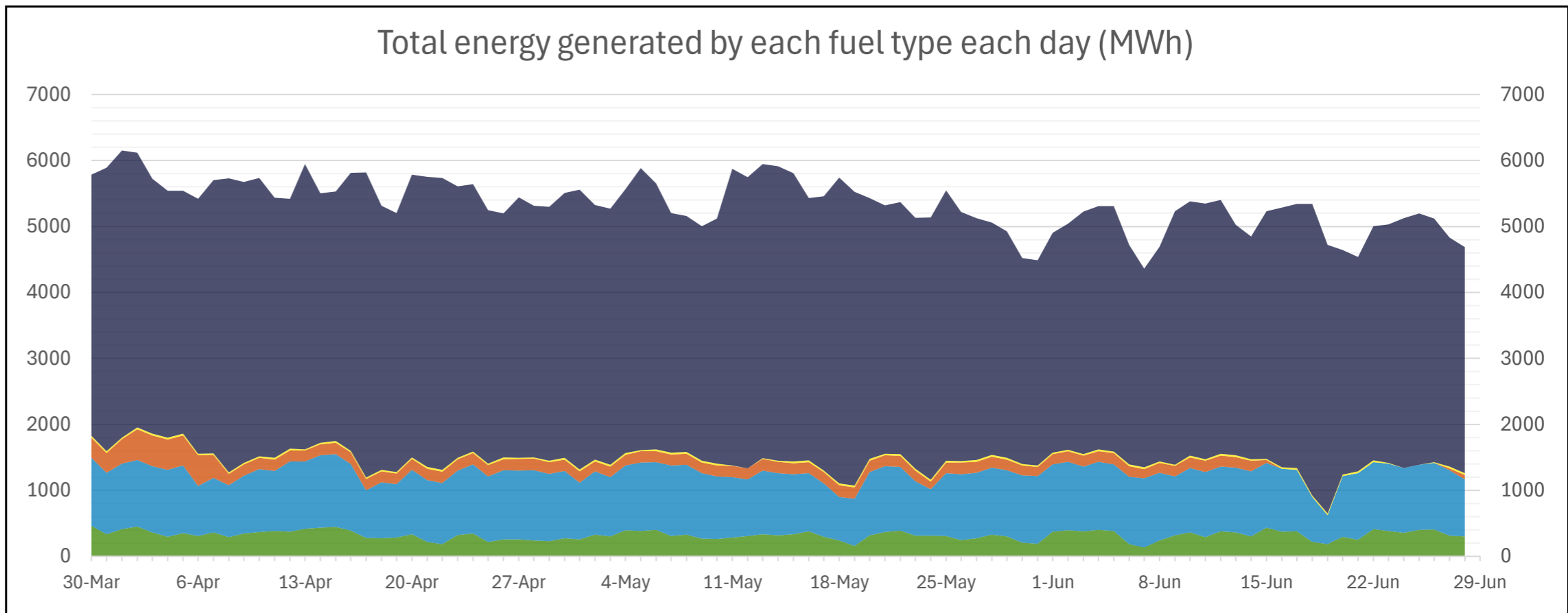
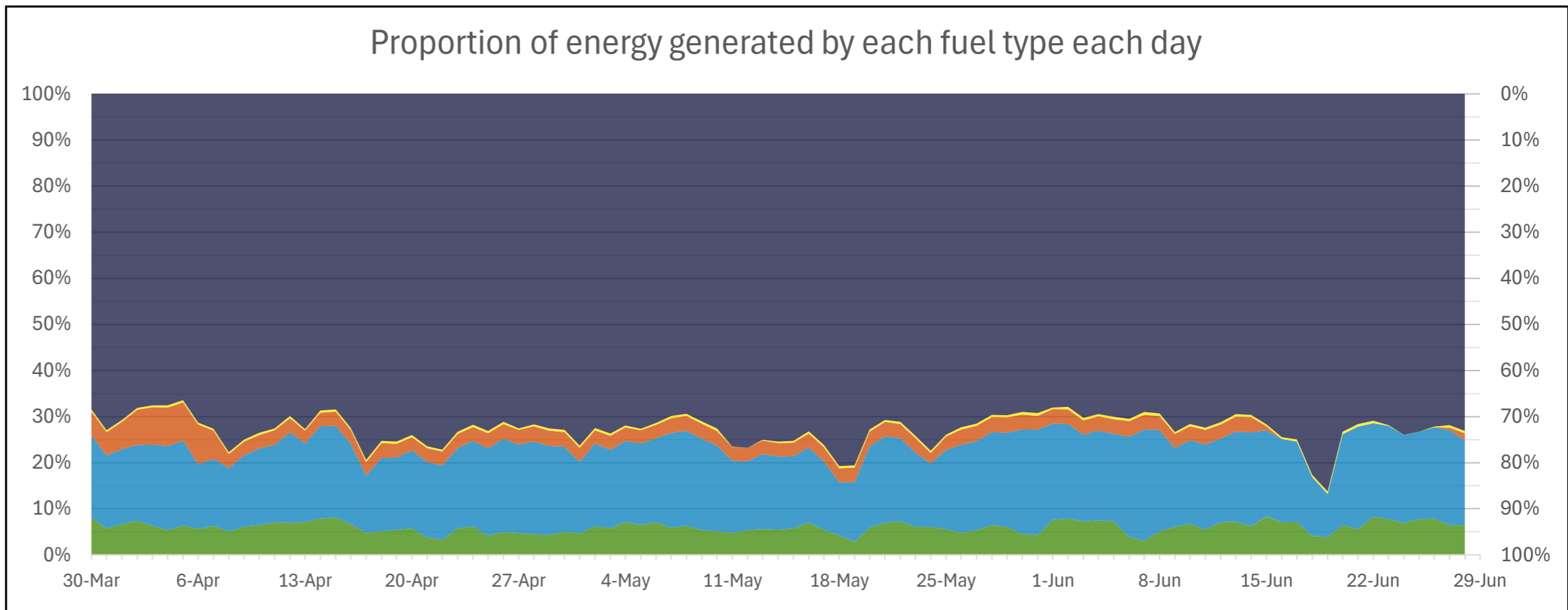
Total Overall (Quarter)		
Fuel	MWh	Percent
Fossil Fuel	353,914	72.7%
Biomass	2,090	0.4%
Steam	15,043	3.1%
Distributed PV	86,563	17.8%
Utility PV	29,200	6.0%



Best Hour:		
68.2% at 13:00, 26 Jun		
Fuel	MWh	Percent
Fossil Fuel	83.3	31.8%
Biomass	0.0	0.0%
Steam	0.0	0.0%
Distributed PV	129.6	49.5%
Utility PV	49.1	18.7%



Best Week:		
27.0% for 22 Jun - 28 Jun		
Fuel	MWh	Percent
Fossil Fuel	25,353	72.5%
Biomass	94	0.3%
Steam	98	0.3%
Distributed PV	6,861	19.6%
Utility PV	2,584	7.4%

**Definitions:**  
For definitions and other information, please visit the NTESMO website:

[Data | NTESMO](#)

**Disclaimer:**  
This report is for informational purposes only and is subject to the accuracy of the source data.

Hourly values, including maximums and minimums, are based on the average for the following hour. As such, the inter-hourly values may be higher or lower, respectively.

**Data sources:**  
Fossil Fuel, Biomass, Steam, Utility PV:  
PWC PI Historian  
Distributed PV:  
3rd party estimated actuals