

Alice Springs Renewables Report: 6 Jan 2025 - 6 Apr 2025

Renewables Penetration:

15.7%

Fossil Fuels:

84.3%

Other Sources*:

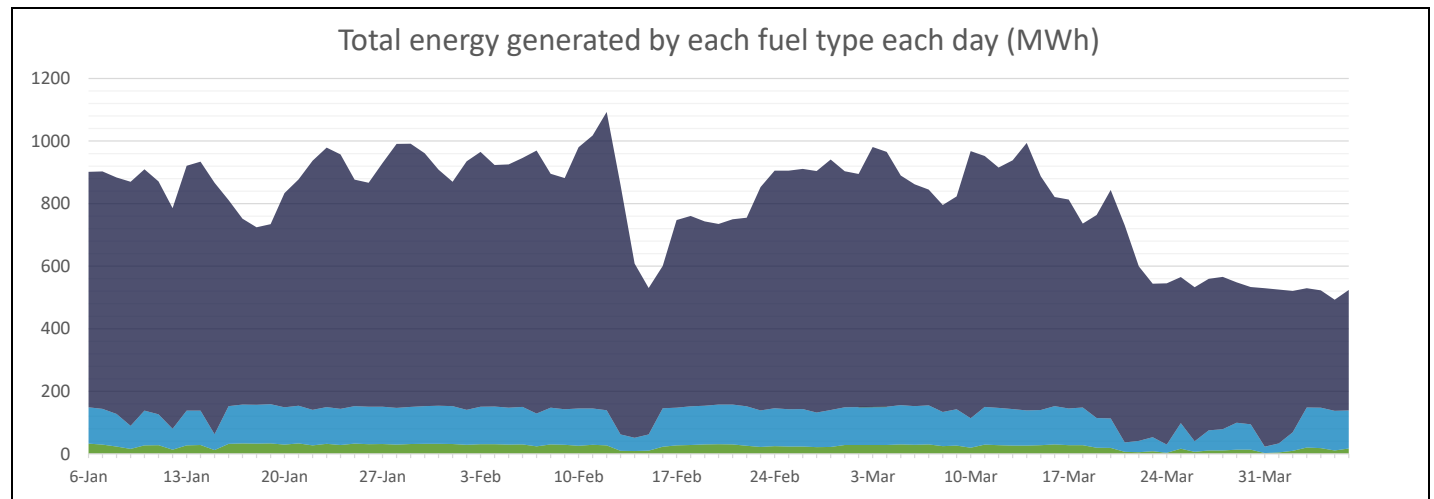
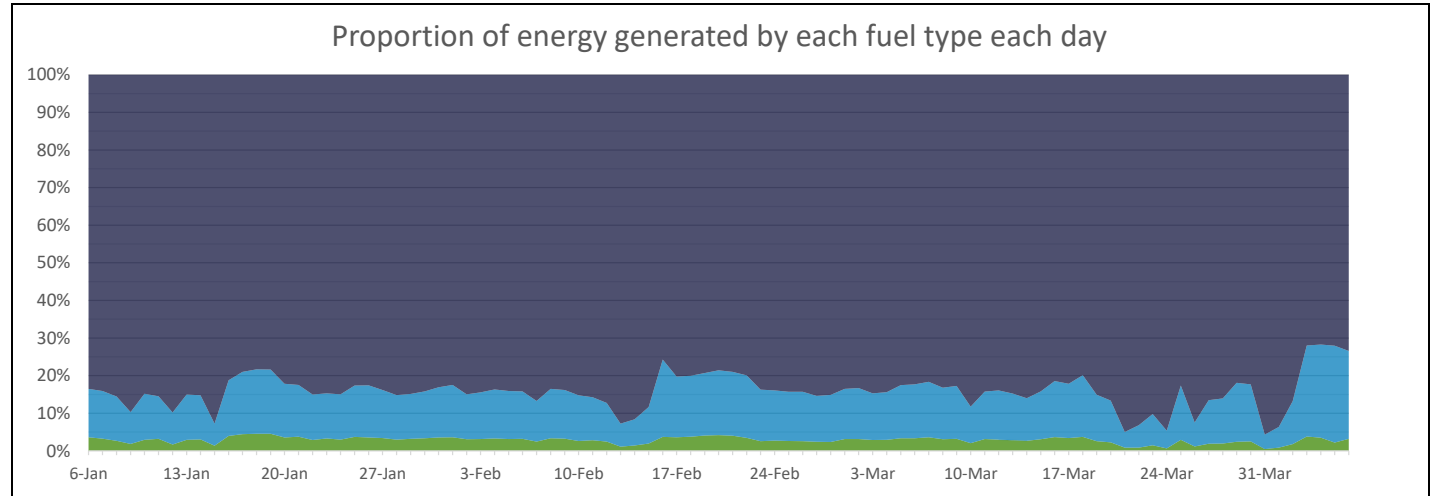
0.0%

Minimum Gross Demand:	14.3	MW @ 3:00, 5 Apr
Maximum Gross Demand:	63.3	MW @ 15:00, 12 Feb
Minimum Net Demand:	9.0	MW @ 11:00, 5 Apr
Maximum Net Demand:	56.1	MW @ 17:00, 12 Feb
Maximum Renewable Power:	19.6	MW @ 13:00, 20 Feb

Total Overall		
Fuel	MWh	Percent
Fossil	62,226	84.3%
Biomass	0	0.0%
Steam	0	0.0%
Distributed PV	9,465	12.8%
Utility Solar	2,161	2.9%

Best Hour:		
70.4%	at	11:00, 3 Apr
Fuel	MWh	Percent
Fossil	8.0	29.6%
Biomass	0.0	0.0%
Steam	0.0	0.0%
Distributed PV	15.9	58.6%
Utility Solar	3.2	11.8%

Best Week:		
19.8%	for	17 Feb - 23 Feb
Fuel	MWh	Percent
Fossil	4,285	80.2%
Biomass	0	0.0%
Steam	0	0.0%
Distributed PV	864	16.2%
Utility Solar	195	3.6%



* Landfill gas is methane sourced from the Shoal Bay waste facility that is burned to power a generator. This methane is constantly generated by the waste and would otherwise be released into the atmosphere. Therefore, utilising it in this way in fact decreases the emissions by destroying the methane and by offsetting the need for additional fossil fuel generation. (<https://www.epa.gov/lmop/benefits-landfill-gas-energy-projects>)

* Steam is created using waste heat from fossil fuel generation. The steam is then used to create low-emissions power that offsets the need for additional fossil fuel generation.

Data sources:
 BTM - 3rd party estimated actuals
 Other generation - PI

This report is for informational purposes only and is subject to the accuracy of the source data.