

# Alice Springs Renewables Report: 2 Jan 2023 - 2 Apr 2023

Renewables  
Penetration:

17.6%

Fossil Fuels:

82.4%

Other Sources\*:

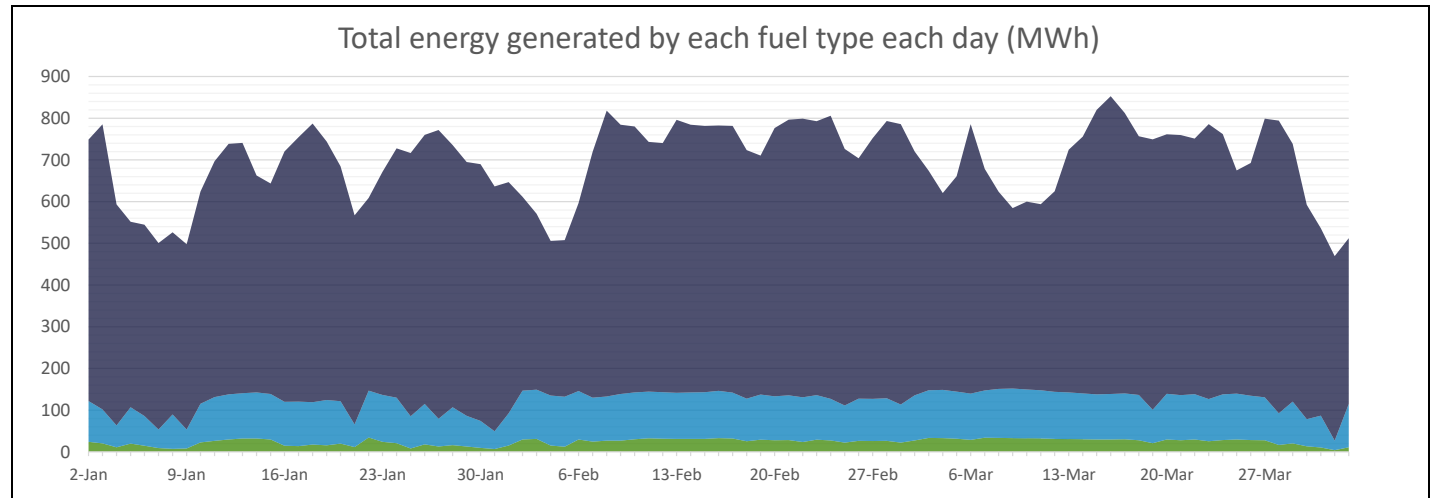
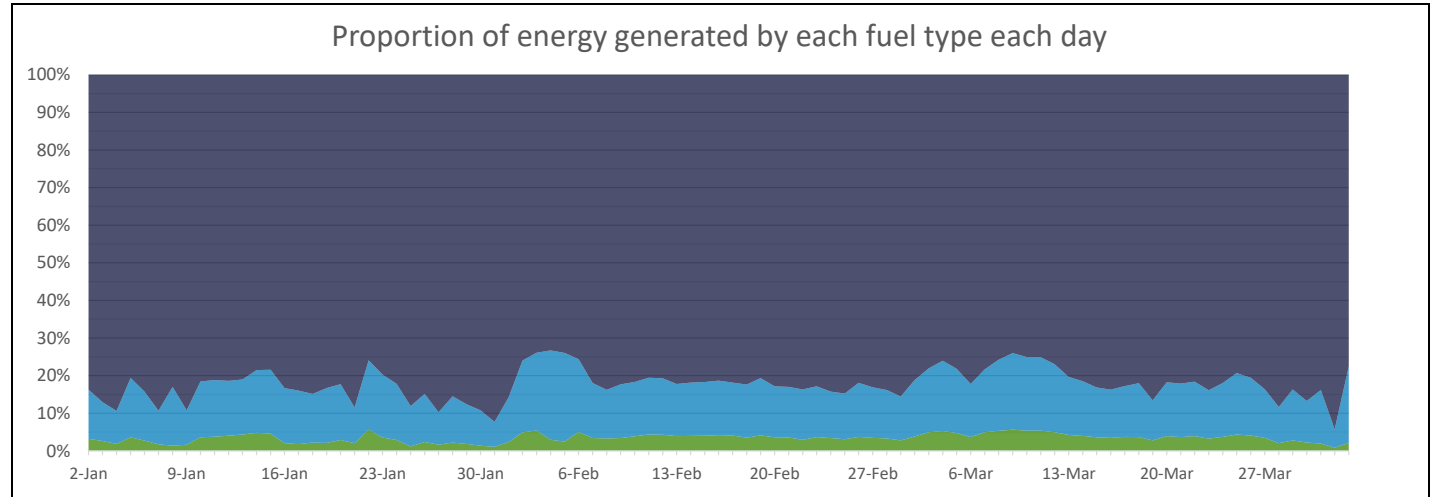
0.0%

Minimum Gross Demand:	15.0	MW @ 3:00, 1 Apr
Maximum Gross Demand:	51.7	MW @ 15:00, 6 Mar
Minimum Net Demand:	8.3	MW @ 10:00, 5 Feb
Maximum Net Demand:	44.2	MW @ 17:00, 16 Mar
Maximum Renewable Power:	18.9	MW @ 13:00, 9 Mar

Total Overall		
Fuel	MWh	Percent
Fossil	52,321	82.4%
Biomass	0	0.0%
Steam	0	0.0%
Distributed PV	9,019	14.2%
Utility Solar	2,172	3.4%

Best Hour:		
67.2%	at	11:00, 5 Feb
Fuel	MWh	Percent
Fossil	7.4	32.8%
Biomass	0.0	0.0%
Steam	0.0	0.0%
Distributed PV	14.3	63.0%
Utility Solar	1.0	4.3%

Best Week:		
23.0%	for	6 Mar - 12 Mar
Fuel	MWh	Percent
Fossil	3,460	77.0%
Biomass	0	0.0%
Steam	0	0.0%
Distributed PV	808	18.0%
Utility Solar	224	5.0%



\* Landfill gas is methane sourced from the Shoal Bay waste facility that is burned to power a generator. This methane is constantly generated by the waste and would otherwise be released into the atmosphere. Therefore, utilising it in this way in fact decreases the emissions by destroying the methane and by offsetting the need for additional fossil fuel generation. (<https://www.epa.gov/lmop/benefits-landfill-gas-energy-projects>)

\* Steam is created using waste heat from fossil fuel generation. The steam is then used to create low-emissions power that offsets the need for additional fossil fuel generation.

**Data sources:**  
BTM - 3rd party estimated actuals  
Other generation - PI

This report is for informational purposes only and is subject to the accuracy of the source data.