

DKPS Renewables Report: 30 Mar 2026 - 28 Jun 2026

Renewable
Penetration:

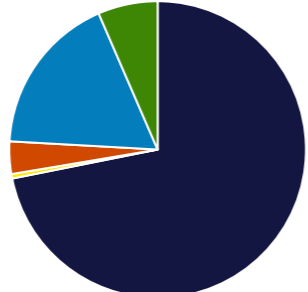
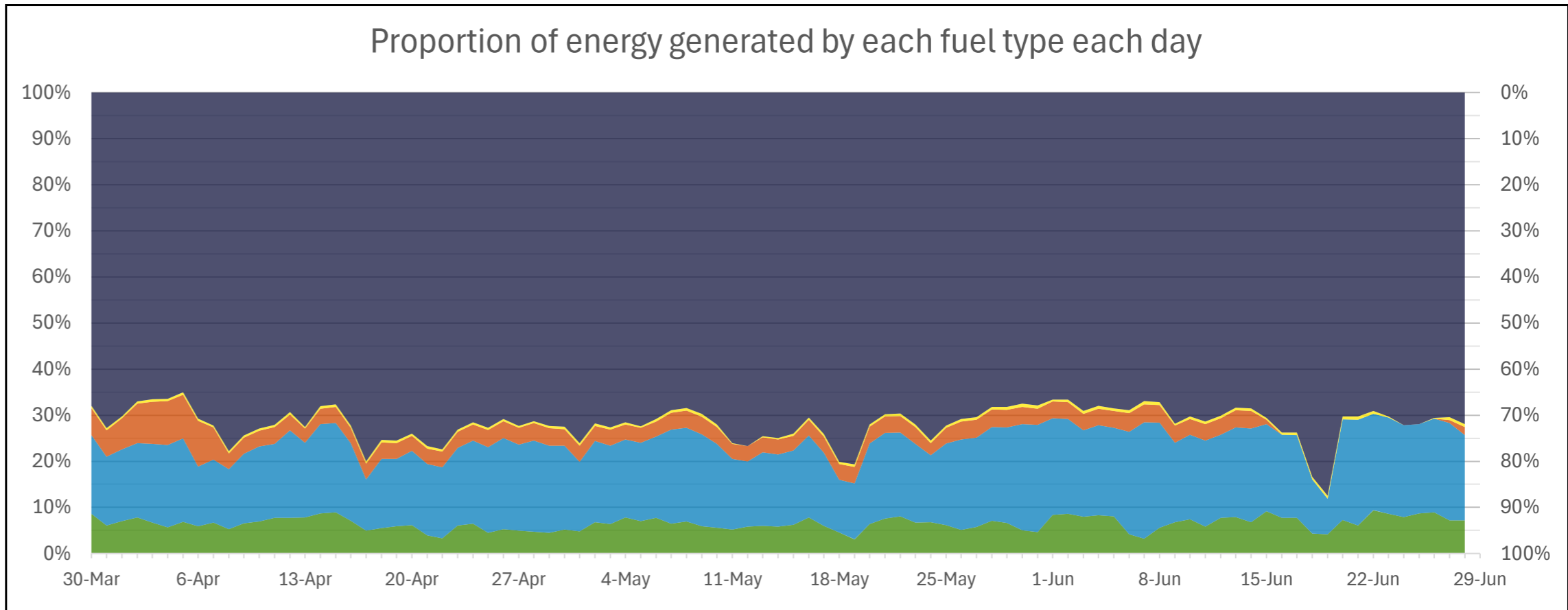
24.1%

Fossil Fuels: 71.9%

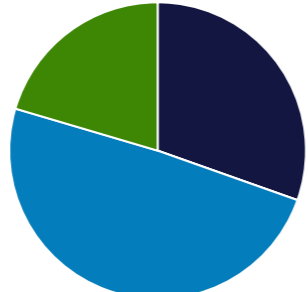
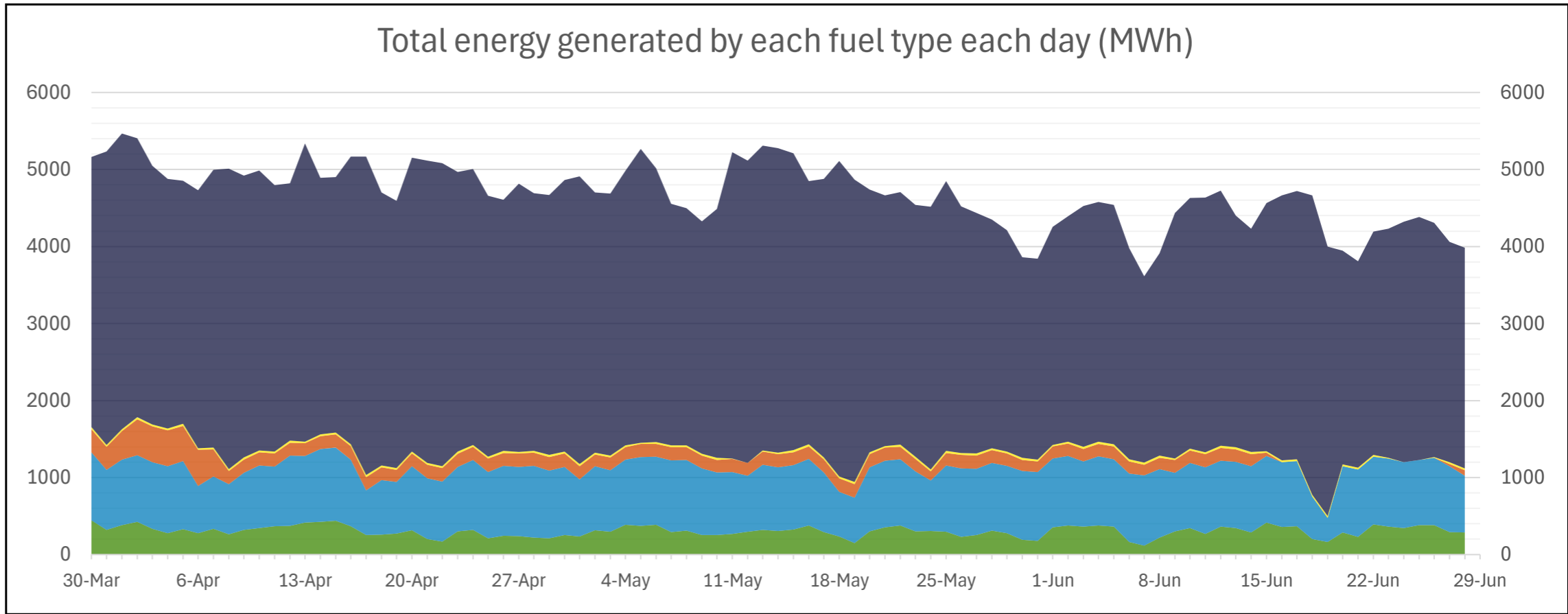
Other Sources: 4.0%

Minimum Gross Demand:	102.5 MW @ 3:00, 8 Jun
Maximum Gross Demand:	297.5 MW @ 14:00, 2 Apr
Minimum Net Demand:	66.4 MW @ 12:00, 7 Jun
Maximum Net Demand:	251.0 MW @ 18:00, 1 Apr
Maximum Renewable Power:	167.4 MW @ 12:00, 15 Apr

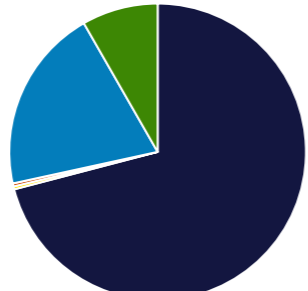
Total Overall (Quarter)		
Fuel	MWh	Percent
Fossil Fuel	306,052	71.9%
Biomass	2,090	0.5%
Steam	15,043	3.5%
Distributed PV	74,989	17.6%
Utility PV	27,717	6.5%

Best Hour:		
69.6%	at	13:00, 26 Jun
Fuel	MWh	Percent
Fossil Fuel	69.2	30.4%
Biomass	0.0	0.0%
Steam	0.0	0.0%
Distributed PV	111.9	49.2%
Utility PV	46.5	20.4%

Best Week:		
28.4%	for	22 Jun - 28 Jun
Fuel	MWh	Percent
Fossil Fuel	20,908	70.9%
Biomass	94	0.3%
Steam	98	0.3%
Distributed PV	5,934	20.1%
Utility PV	2,443	8.3%



Definitions:
For definitions and other information, please visit the NTESMO website:

[Data | NTESMO](#)

Disclaimer:
This report is for informational purposes only and is subject to the accuracy of the source data.

Hourly values, including maximums and minimums, are based on the average for the following hour. As such, the inter-hourly values may be higher or lower, respectively.

Data sources:
Fossil Fuel, Biomass, Steam, Utility PV:
PWC PI Historian
Distributed PV:
3rd party estimated actuals